

UC^{CONNECT}® UC9500 High Density Fibre Suite

8.7 Patch Panel Accessories

UC9500 Splice Tray Cover

Features

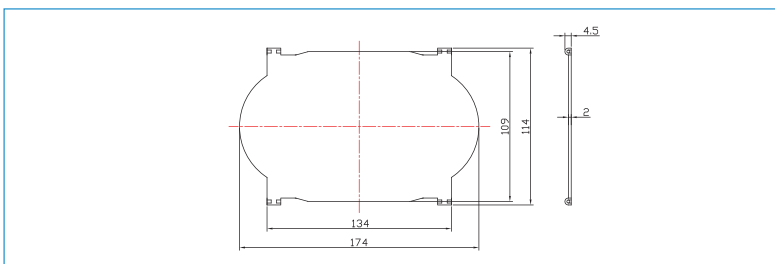
- Light weight for easy handling
- High quality fingerprint and dust resistant surfaces
- It is compatible with stackable UC9500 Splice Tray ; its detachable to fit onto top of a splice tray stack.

Application

UC9500 Splice Tray Cover keeps the fusion splices away from accidental stress-strain, water droplets and dust particles.

Technical Information

Material	Details
Cover material	ABS
Colour	Black



UC9500 Splice Tray Cover

UC9500 24-Fibre Splice Tray (Cover-less)

Features

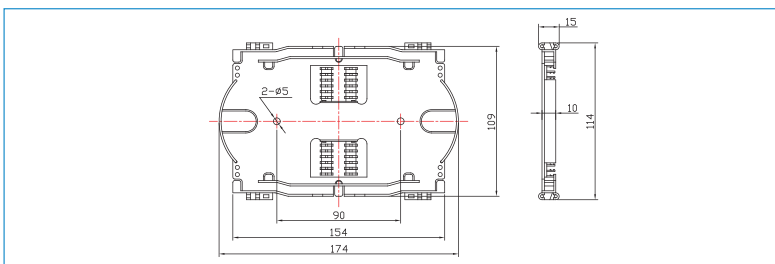
- Stackable with detachable cover.
- Light weight.
- Highly durable.
- Support up to 24 multimode and singlemode fusion splices.

Application

UC9500 24-Fibre Splice Tray is a fusion splice enclosure, providing critical protection for fusion splices and is compatible with UC9500 1U Distribution Panel 4- Slot Empty Fixed.

Technical Information

Material	Details
Cover material	ABS
Colour	Black
Weight	< 90 gram
Surface finish	Resistant to fingerprint and dust



UC9500 24-Fibre Splice Tray (Cover-less)

Ordering Information

UC P/N	Product Description	P.U
PPST9521-C	UC9500 Splice Tray Cover	1pc
PPST9521-24	UC9500 Splice Tray 24F	2pc/box